

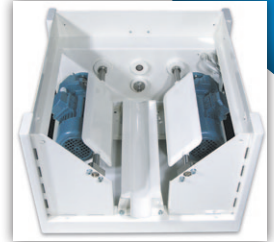
Precisely and consistently feed a wide range of materials

Get the strength and stability of structural tube-frame construction with the ability to support large hoppers or ancillary equipment.



Choose from straight nozzles, T-nozzles, nozzles with screw support bearing and elongated distribution nozzles for a variety of metering, spreading and seasoning applications.

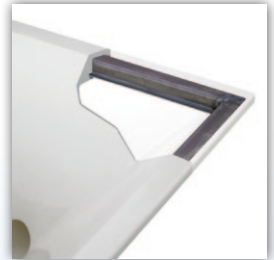
Optimize product flow with external paddle agitators that reduce bridging, limit material contact surfaces, reduce opportunity for contamination and simplify cleaning.



Remove hopper in seconds with quick-coupled screw. Unique design prevents decoupling when torque is applied.



Handle and store hopper easily. Steel reinforcement molded into the flexible hopper flange enables the hopper to retain its shape and capacity.



Reduce downtime and minimize contamination.

- **Precisely feeds and measures** free-flowing and non-free-flowing bulk solids, granules and powders.
- **Achieves superb volumetric performance through flexible, funnel-shaped hopper** that is mechanically agitated from the outside.
- **Easily disassembles for easier cleaning** because of quick-coupled components. Maximizes uptime.
- **Satisfies more applications** than any other feeder design.
- **Maintains material quality without degradation**, segregation or agglomeration.
- **Versatile design** provides discrete batches or operates continuously on a rate-controlled basis.
- **Starts under heavy loads.** Makes unit ideal for installing beneath silos and large surge hoppers.
- **Delivers premium enhanced performance.** More automatic operation, validation and status monitoring is available through the simple addition of load cells and weight differential instrumentation.
- **Warns you when hopper contents get low** so you can keep hopper full and keep feed rate consistent.
- **5-year limited warranty** on the flexible hopper.



A true performance guarantee ensuring your Hapman equipment achieves the specific results it was designed and manufactured to deliver. And if you need technical support, call us. We are available 24/7.

HAPMAN®

Ideas that move.™

PosiPortion™ Feeders

Specifications

Model No.	160	200	240	280	320
CAPACITIES					
HOPPER CAPACITY	600 in ³ (9,832 cm ³)	600 in ³ (9,832 cm ³)	1 ft ³ (0.028 m ³)	1 ft ³ (0.028 m ³)	3 ft ³ (0.085 m ³)
FEED RATE	60 in ³ to 5 ft ³ /h (983.22 cm ³ to 0.142 m ³ /h)	0.5 ft ³ to 14 ft ³ /h (0.014 m ³ to 0.4 m ³ /h)	1 ft ³ to 50 ft ³ /h (0.028 m ³ to 1.416 m ³ /h)	2.6 ft ³ to 88 ft ³ /h (0.074 m ³ to 2.49 m ³ /h)	5 ft ³ to 1,100 ft ³ /h (0.142 m ³ to 31.15 m ³ /h)
NOMINAL FRAME DIMENSIONS					
DEPTH	16 in (40 cm)	16 in (40 cm)	24 in (60 cm)	24 in (60 cm)	32 in (80 cm)
WIDTH	16 in (40 cm)	16 in (40 cm)	24 in (60 cm)	24 in (60 cm)	32 in (80 cm)
HEIGHT	13 in (33 cm)	13 in (33 cm)	17 in (43.18 cm)	17 in (43.18 cm)	26 in (66.04 cm)
NOZZLE LENGTH	<i>as required</i>	<i>as required</i>	<i>as required</i>	<i>as required</i>	<i>as required</i>

PRODUCT OPTIONS



Increase holding capacity and extend time between refills with optional hopper extensions.



Increase feeder performance by integrating load cells and instrumentation so equipment operates more automatically and provides immediate feedback that material was delivered.



Minimize housekeeping and air-quality problems with optional dust collection hood. Keeps material in process; makes work environment safer.



Handle spreading and seasoning applications with optional elongated distribution nozzle. Ideal for feeding seasoning drums or distributing across moving conveyor belts.



Alert your control system when material is getting low in the hopper. Optional level sensors help workers keep hopper full and feed rate consistent.



Choose from many easy-to-change-out auger options — flat, square, or round (with or without a center core), continuously welded, polished or milled from solid bar stock — to suit your exact need.

CE

800-427-6260 (US/Can) or 269-343-1675
fax 269-349-2477

HAPMAN

Take a free **TEST DRIVE!** Contact: sales@hapman.com

Ideas that move.™